

## FREE\* Radon Test Kit Coupon

\*plus shipping fee for mail orders

For Nevada residents only

Offer ends Feb. 29, 2020

This special radon test kit offer is provided by University of Nevada, Reno Extension Nevada Radon Education Program, the Nevada Division of Public and Behavioral Health and the U.S. Environmental Protection Agency. The test kit includes analysis, postage-paid mailer and laboratory test report.

NAME \_\_\_\_\_

MAILING ADDRESS \_\_\_\_\_

CITY \_\_\_\_\_ STATE \_\_\_\_\_ ZIP \_\_\_\_\_

PHYSICAL ADDRESS \_\_\_\_\_

CITY \_\_\_\_\_ STATE \_\_\_\_\_ ZIP \_\_\_\_\_

PHONE ( ) \_\_\_\_\_

EMAIL \_\_\_\_\_

How did you hear about radon? \_\_\_\_\_

Free kits can be picked up at a local Extension or partner office listed in this brochure.

To receive a kit by mail during the free period, A SHIPPING FEE of \$4 APPLIES. Please make checks payable to Board of Regents and mail this coupon to:

**Nevada Radon Education Program**  
4955 Energy Way  
Reno, NV 89502

NOTE: For out of state residents or to get a test kit after the coupon expires, go to <https://nvstradonkit.eventbrite.com> using American Express, Discover, MasterCard and Visa cards, or mail this coupon and a \$14 check payable to Board of Regents to the address above, or visit an Extension office near you.

### Office Use

DATE: \_\_\_\_\_

TEST KIT NUMBER: \_\_\_\_\_

Code

NRAM 2020 City of Sparks

Kit not intended for commercial use or resale

# RADON

## THE SILENT KILLER

### SURGEON GENERAL'S WARNING:

Radon Causes Lung Cancer.  
You Should Test Your Home.

Radon is the primary cause of lung cancer among nonsmokers

**21,000 AMERICANS  
DIE OF RADON-CAUSED  
LUNG CANCER EACH YEAR**

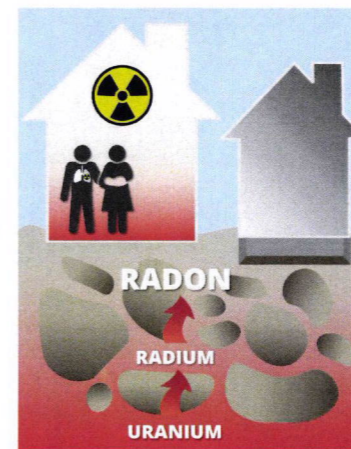


Nevada  
**Radon**  
Education Program

Like us on Facebook: Nevada Radon Education  
Follow us on Twitter: @NVRadonProgram  
[www.RadonNV.com](http://www.RadonNV.com) or 888-RADON10

### What is radon?

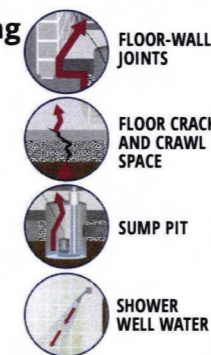
- Radon is a naturally occurring radioactive gas that you can't see, smell or taste.
- It is produced from the decay of uranium present in rock and soil.
- Radon can accumulate in buildings, causing an increased risk for lung cancer.



### How does radon enter a home?

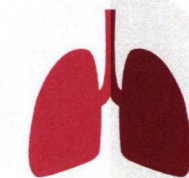
Radon usually enters building from the soil. Common entry points include:

- Cracks in the foundation and walls
- Construction joints
- Gaps in suspended floors
- Gaps around service pipes
- Floor drains, sump pumps
- Retaining walls



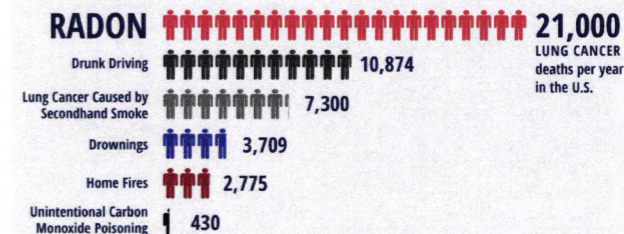
### What are the health effects from exposure to radon?

- Radon is the leading cause of lung cancer among nonsmokers.
- Lung cancer is the only health effect that has been scientifically linked to radon exposure.
- The U.S. Environmental Protection Agency estimates radon is responsible for 21,000 lung cancer deaths each year in the United States.
- Smokers are at higher risk of developing radon-induced lung cancer.
- According to experts, living in a home with an average radon level of 4 pCi/l (the EPA Action Level) poses a similar risk of developing lung cancer as smoking about half a pack of cigarettes a day!
- The U.S. Surgeon General and EPA recommend all homes be tested for radon.



If you smoke and your home has high radon levels, your risk of lung cancer is even higher

### Comparison of causes of death



Sources: U.S. EPA Citizen's Guide to Radon, 2017 National Highway Traffic Safety Administration, 2014 Centers for Disease Control and Prevention, 2017 National Safety Council, 2016 U.S. Fire Administration and 2019 Centers for Disease Control.

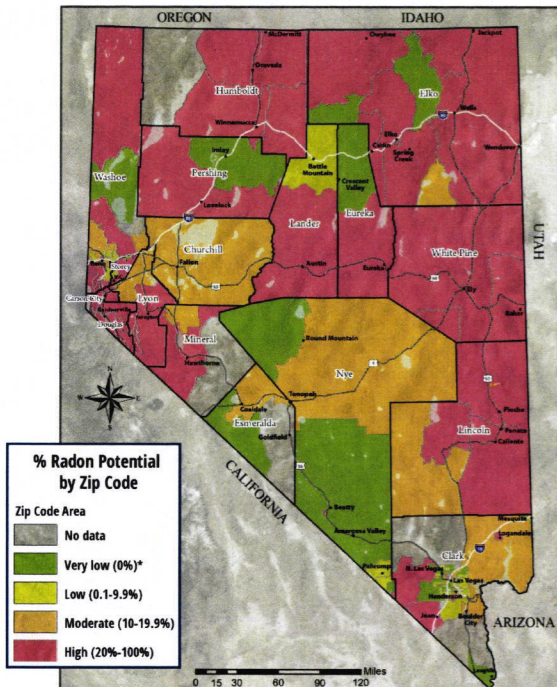


## How do you know if your home has a radon problem?

- **One in 4 Nevada homes tested have elevated radon concentrations.**
- The U.S. Surgeon General recommends all homes be tested for radon.
- Radon can enter any home, old or new, large or small.
- Two neighboring houses can have totally different radon levels.
- Slab, basement or crawl space foundations all have the potential for a radon problem.
- Homes in 12 Radon Zone 1 counties have the highest occurrence for elevated radon levels. Zone 1 counties are **Carson City, Douglas, Elko, Eureka, Humboldt, Lincoln, Lyon, Mineral, Pershing, Storey, Washoe and White Pine.**
- The only way to know the radon level in your home is to test.

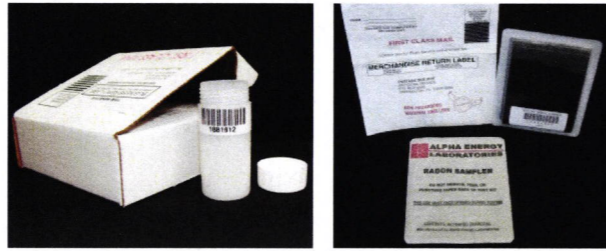


## Nevada Radon Results



\*\*Note: Results are based on independently tested home data from program-provided kits, radon professionals and radon labs, from 1989 to June 30, 2018. When known, post-mitigation results are not included and usable results are valid tests, one per home, using the highest radon level on the lowest tested level of the home.

## Testing for radon is easy



- The test is easy to do and **takes three days to complete.**
- The test kit includes a radon detector, instructions, a postage-paid return mailer, and the laboratory analysis report.
- Short-term radon test kits are available to Nevada residents at Cooperative Extension offices listed or by filling out the attached coupon.

## Private water wells and radon

The Nevada Division of Public and Behavioral Health has found no evidence that radon in water contributes significantly to the indoor radon problem in Nevada. The major health concern for radon is from breathing elevated levels of radon in the air, which can cause lung cancer. Thus, **test the home for radon in air first before considering a radon in water test.**

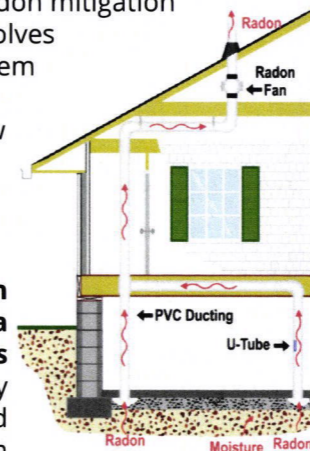
Generally, private wells are more apt to have a radon concern than public water systems. If you are interested in testing your private well water, a number of sources are available for testing radon in water. The Nevada State Public Health Laboratory, located on the UNR campus, will send water samples for analysis to an EPA approved lab for about \$89. For more information, call the Nevada Radon Hotline.

## How do you fix a radon problem?

- **Homes with high radon levels can be fixed.**
- If you have performed only a single test, the EPA recommends a second test to confirm your results before fixing your home.
- Radon levels fluctuate naturally, and it is important to know if the initial test was an

accurate assessment of your home's yearly average radon level.

- If the average of the two tests is at or above the EPA Action Level of 4 pCi/l it is time to address the problem.
- There are several radon mitigation strategies which involves installing a vent system with an active fan. The system will draw out the harmful soil gas and prevent it from entering your home.
- **Certified radon mitigators, with a state contractor's license, are highly recommended for fixing radon problems.**
- For certified Nevada radon mitigators, go to:
  - <http://bit.ly/NVCertifiedTester>
  - <http://aarst-nrpp.com>
  - <http://www.nrsb.org>



## For more information

### Nevada Radon Education Program

#### Nevada Radon Hotline:

888-RADON10 (888-723-6610)

#### Email:

Susan Howe – [showe@unr.edu](mailto:showe@unr.edu)

Nadia Noel – [nadian@unr.edu](mailto:nadian@unr.edu)

#### Radon in Nevada website: [www.RadonNV.com](http://www.RadonNV.com)

### Nevada Division of Public and Behavioral Health

775-687-7550



This publication is supported by the Nevada State Division of Public and Behavioral Health through Grant Number K1-96963520-0 from the U.S. Environmental Protection Agency. Its contents are solely the responsibility of the authors and do not represent the official views of neither the Division nor the U.S. Environmental Protection Agency.



The University of Nevada, Reno is committed to providing a place of work and learning free of discrimination on the basis of a person's age, disability, whether actual or perceived by others (including service-connected disabilities), gender (including pregnancy related conditions), military status or military obligations, sexual orientation, gender identity or expression, genetic information, national origin, race, or religion. Where discrimination is found to have occurred, the University will act to stop the discrimination, to prevent its recurrence, to remedy its effects, and to discipline those responsible.

Test kits are available in January and February at the following Extension and partner locations:

#### Carson City County

2621 Northgate Lane #15  
Carson City, 89706  
Phone: 775-887-2252

#### Churchill County

111 Sheckler Road, Fallon  
Phone: 775-423-5121

#### Clark County

8050 Paradise Road #100  
Las Vegas, 89123  
Phone: 702-222-3130

#### A.D. Guy Knowledge Center

817 N St., Las Vegas  
Open 10 a.m. to 7 p.m.  
Call: 702-998-0223

#### Henderson City Hall

City Clerk's Office  
240 S. Water St., Henderson  
Call: 702-267-1400

#### Northeast Clark County

1897 N. Moapa Valley Blvd., Logandale  
Call: 702-397-2604

#### NE Clark County Satellite

155 N. Willow St., Mesquite  
Call: 702-346-7215

#### Laughlin office

55 Civic Way, Laughlin  
Call ahead: 702-299-1333

#### Douglas County

1325 Waterloo, Gardnerville  
Phone: 775-782-9960

#### Genoa Town Office

2289 Main St., Genoa  
Phone: 775-782-8696

#### Indian Hills GID

3394 James Lee Park Road  
#A, Carson City  
Phone: 775-267-2805

#### Tahoe Regional Planning Agency

128 Market St., Stateline  
Phone: 775-588-4547

#### Elko County

701 Walnut St., Elko  
Call ahead: 775-738-7291

#### West Wendover City Hall

1111 N. Gene L. Jones Way  
Phone: 775-664-3081

#### Eureka County

701 S. Main St., Eureka  
Call ahead: 775-237-5326

#### Humboldt County

1085 Fairgrounds Road  
Winnemucca  
Call ahead: 775-623-6304

#### Lander County

815 N. Second St., Battle Mtn  
Call ahead: 775-635-5565

#### Lincoln County

360 Lincoln St., Caliente  
Call ahead: 775-726-3109

#### Lyon County

504 S. Main St., Yerington  
Call ahead: 775-463-6541

#### Fernley City Hall

595 Silver Lace Blvd.  
775-784-9930

#### Central Lyon County

Fire District  
246 Dayton Valley Road  
Ste. 106, Dayton  
Phone: 775-246-6209

#### Mineral County

205 South A St., Hawthorne  
Call ahead: 775-945-3444

#### Nye County

Northern Nye County  
#1 Frankie St. Old Courthouse, Tonopah  
Call ahead: 775-482-6794

#### Tonopah Town Office

140 S. Main St.  
Phone: 775-482-6336

#### Southern Nye County

1651 E. Calvada Blvd., Pahrump  
Call ahead: 775-727-5532

#### Town of Round Mountain

100 Hadley Circle, Round Mtn  
Phone: 775-377-2508

#### Pershing County

810 Sixth St., Lovelock  
Call ahead: 775-273-2923

#### Storey County

Storey County Senior Center  
100 Mill St., Virginia City  
Call: 775-847-0957

#### Lockwood Senior/Community Center

800 Peri Ranch Road, Lockwood  
Phone: 775-342-2840

#### Washoe County

4955 Energy Way, Reno  
Phone: 775-336-0252

#### Sun Valley GID

5000 Sun Valley Blvd.  
Phone: 775-673-2220

#### Incline Village Rec Ctr

980 Incline Way  
775-832-1300

#### White Pine County

950 Campton St., Ely  
Call ahead: 775-289-4459

Call the Radon Hotline for more info: 888-RADON10